



touch panels **AMX**



COMMAND

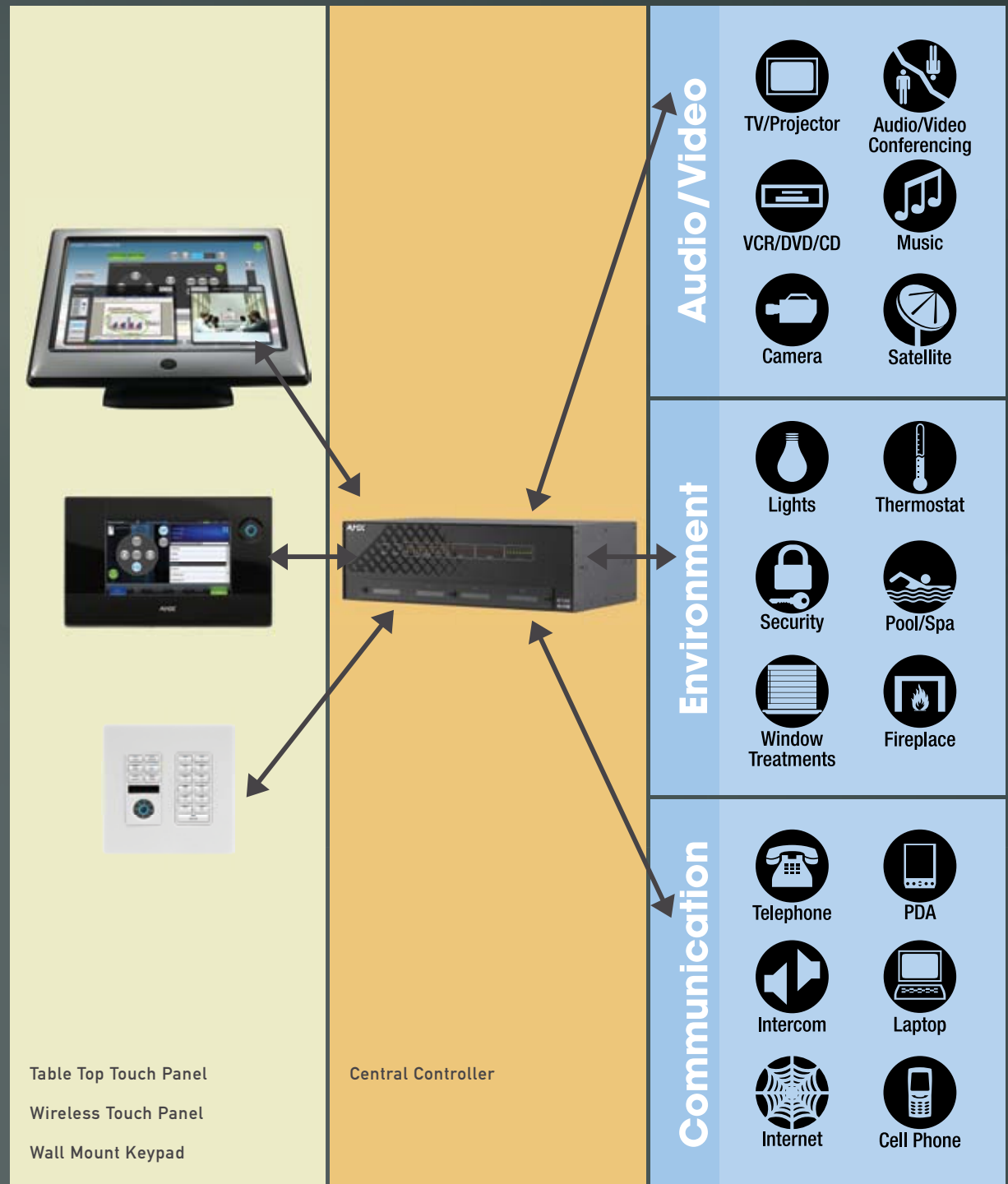
Control system operations begin with the user interface, AMX Touch Panels and Keypads, which use a combination of touch-activated buttons and icons to easily and effortlessly navigate the system and carry out any required command. Whether you need to light up an entire boardroom or power down every inch of a 20,000 square foot estate, these interfaces are simple to operate, but smart enough to group the hundreds of required steps to deliver instantaneous, automated directions – all with the slightest touch.

CONTROL

From controlling one component to managing 1000 devices, no job is too large or too small for AMX NetLinX Integrated Controllers, the nerve centers of every control system. With smart processors and powerful memory reserves, these controllers can carry out multiple automated command sequences to produce instant, flawless results from the devices they control.

COMMUNICATE

The AMX Control System was designed to communicate with the electronic devices that populate our entire world. From CD changers, plasma screens and jacuzzi jets, to cameras, projectors and communication satellites, AMX is ready to command, control and communicate with life around us – easily, accurately and efficiently.



COMPLEMENTARY CONTROL

In many boardrooms, there are secondary panels that provide key functionality, typically used when mobility is essential and wireless is the answer. With a simple press of “AUDIO CONFERENCE”, your wall sconces are dimmed, the table lights brighten, your conferencing system powers up and all 36 of your global satellite offices are brought onscreen for instant, one-touch dialing and integration. All of your clients’ names, numbers and time zones are clearly displayed so that everyone at the table can see who’s coming online. At the end of your meeting, another touch returns the room to its original state, leaving your clients wanting to learn more about your company’s capabilities. The Modero ViewPoint 5200i – taking your meetings to new heights.



Cool It

During your audio conference, you notice the room's a little warm, just touch HVAC and take the temperature down a few degrees.



Call By Touch

At a glance, you can view your conferencing contacts' names, numbers and time zones and instantly dial their numbers and bring them on the call just by touching each name.

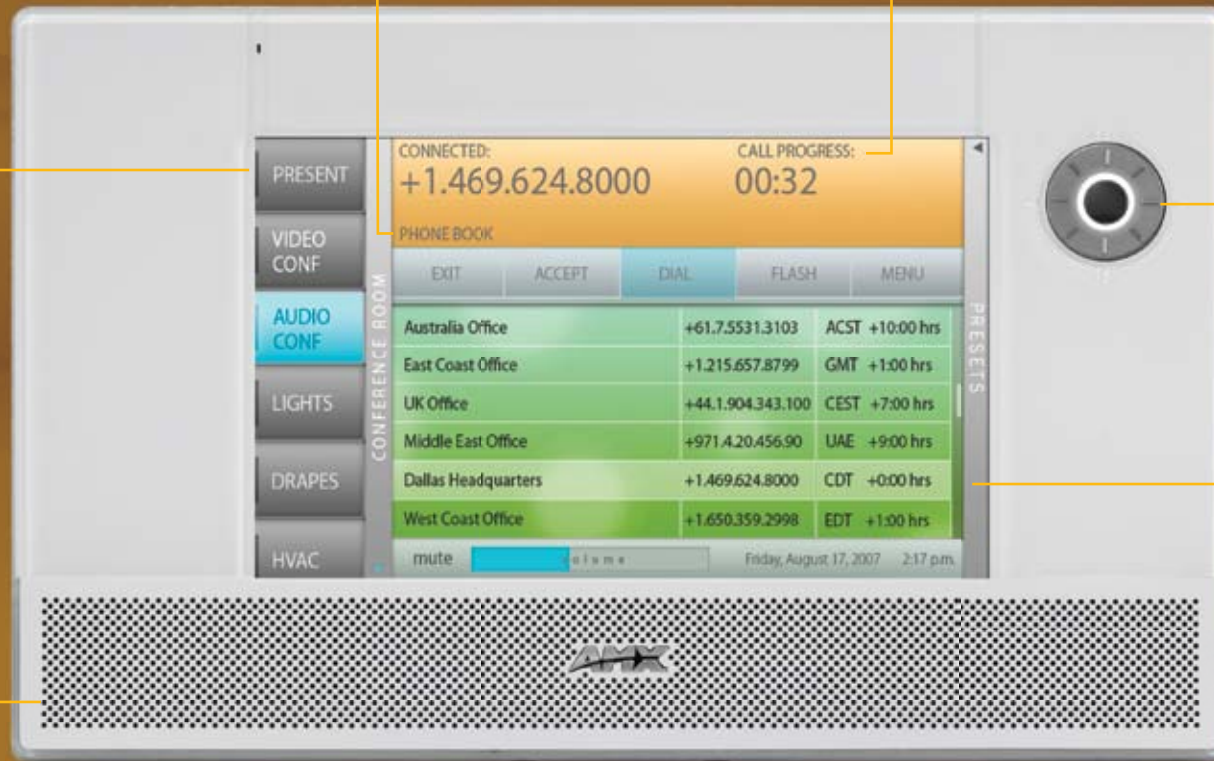


At Your Beck And Call

To better illustrate an idea to your clients, you remember a PowerPoint slide you created but it's on your laptop. Just touch "PRESENT" to instantly close the drapes, lower the projection screen and switch your projector's video input to display your laptop's output.

Integrated Intercom

Forgot last month's sales numbers on your desk? Just call your executive assistant via the integrated intercom to bring them in to you.



On The Fly

In addition to unlimited touch control, it's nice to have the ability to make quick, on the fly adjustments with the integrated navigation wheel like increasing the volume of your audio conference or fading up the lights.

Set It Up

Easily access master preset modes for various activities and devices such as cameras and audio conferencing.

MODERO VIEWPOINT 5200i | 5.2" WIDESCREEN



5.2" modero

MORE TIME TO ENJOY THE THINGS YOU LOVE

Relaxing on the sofa. Playing with the kids. Reading the Sunday paper. These are the simple activities we love that make home our favorite place to be. Modero Touch Panels give you more time to enjoy life and less time managing it. Whether you'd like to watch a movie, warm up the spa or switch from iPod to Satellite Radio on your Tango audio system – automation of all your home's systems is just a touch away seamlessly and wirelessly from your kitchen, media room or backyard. And while its exterior is ultra-sleek, high-gloss black, this touch panel is completely green on the inside. Not only is it made of earth friendly materials, but it also helps you manage power consumption and increase energy efficiencies throughout your home. The Modero ViewPoint 5150 - opening up a world you never dreamed possible while protecting the world around you.



Jump Around

Want to lower the temperature by a couple of degrees or arm your security system? Easily jump to your most used activities and device controls in just a touch.



iPod Compatible

Its full control of your iPod only made even easier with a much more expansive view of menu functions including one-touch access to playlists, artists, albums, songs and control functions.



"The Movie's Starting..."

As you close the drapes and dims the lights, you can also intercom the kids that movie night is about to begin and monitor your sleeping baby during the show.



Weather At Your Fingertips

When you want to know the temperature, current conditions as well as a five-day forecast – it's all conveniently at your fingertips with the integration of an AMX ViewStat Color Communicating Thermostat.

MODERO VIEWPOINT 5150 | 5.2" WIDESCREEN



5.2" modero

REDEFINING HOTEL AMENITIES

As a busy salesperson, you're typically traveling over 200 days a year, which makes finding a hotel that you can truly be comfortable in, crucial to your success. After a long day of meetings, there's nothing better than coming back to your room and unwinding in the hot tub while listening to the Sinatra channel on Satellite Radio. Just reach for your Modero ViewPoint and everything is set. Adjust the volume a notch, dim the lights to 20%, activate the jets on the tub and close your eyes as your day melts away. And when you're ready for a little dinner, just press "Room Service" and you'll immediately receive a call from downstairs to take your order. In selecting your next luxury hotel, make sure the Modero ViewPoint 5100 is there.

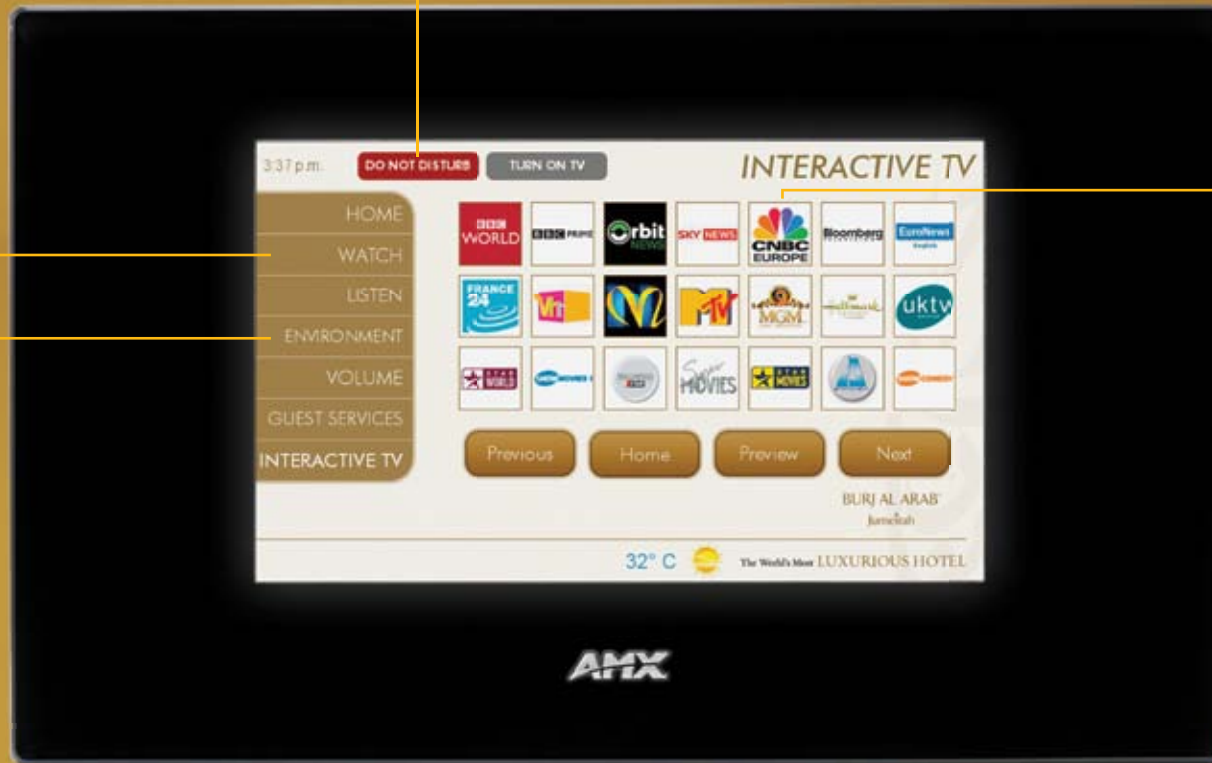


Enjoy The Peace And Quiet
Press "Do Not Disturb" before going to bed and you'll sleep peacefully as a new privacy notice is displayed on your Metreau Entry Communicator.

Watch TV
Press "Watch" and a motorized lift instantly raises a 42" LCD Display into place at the end of your bed and automatically tunes the TV to the Channel Guide for you to identify a program of your choice.



Serious ZZZs
When you're out on the road and really need your sleep, total darkness is the only answer. With a touch, your motorized drapes close and all your lights go out. It's time to grab some serious ZZZs.



Select Channels By Logo
There's no need to know the number of the channel you want to watch. To watch CNBC, just visually locate the CNBC logo on your panel and press it. Satellite Radio is just as simple to listen to.

MODERO VIEWPOINT 5100 | 5.2" WIDESCREEN



5.2" modero

LIGHTS. CAMERA...MAGIC

When you first touch "Watch Movie" on your Modero Touch Panel, something truly magical happens, you are escorted into a technicolor dreamscape. Grand Movie Palaces were once places of wonder where we could escape to the farthest reaches of our imagination. With the Modero ViewPoint 8400i, the grandeur of these larger than life experiences is recaptured from a more familiar, more enjoyable, more comfortable place - your home theater. Much like the unforgettable reaction we had when Dorothy first stepped onto the Yellow Brick Road or the moment when the screen lit up in a bright flash as a silver DeLorean eclipsed 88 miles per hour and took us back to the future, it's lights, camera...magic.





**Thousands Of Movie
And Music Titles
At Your Fingertips**

Selecting a movie from your personal multimedia collection has never been more visually complete.

On With The Show

By pressing a single button that says "WATCH MOVIE", your drapes close, your lights dim, your DVD player starts and volume is adjusted. Sit back and enjoy the show.

"More Popcorn Please"

The integrated digital intercom is perfect for calling out to your husband while he's in the kitchen to refill the popcorn bowl.



On The Sofa Or By The Pool

No matter where you decide to watch your movie, your touch panel can always be by your side and in control. With integrated 802.11b/g wireless capability, just grab it and go.

MODERO VIEWPOINT 8400i | 8.4" STANDARD



8.4" modero

A KNACK FOR REINVENTION

Versatility can often be the defining factor in whether a business flourishes or flounders. And its versatility is what makes the MVP-9000i a critical player in running the business of boardrooms and executive conference rooms. Wired and wireless communications; telephone, intercom and audio/video conferencing as well as nine inches of multi-window screen space make the MVP-9000i one of the most versatile in a long line of commercial-savvy Modero Touch Panels. Whether simultaneously managing a video conference and total environment control from its table charging station, giving the CEO the ability to go handheld to page flip through a presentation or quietly sitting in an outside wall docking station displaying the room's schedule, taking reservations and even providing a virtual doorbell – the MVP-9000i is the touch panel that businesses around the world rely on for its versatility and its knack for reinvention.



Flies By

Simply touch any of the four programmable capacitive buttons and an on-screen label flies out to the right of the button to indicate its function – touch the button again to execute the function.



You Make the Call

With integrated telephone and intercom capability, easily place and receive telephone or intercom calls down the hall or around the globe.



Touch and Go

The convenient capacitive navigation pad offers simplified up, down, right and left navigation just by touching the direction you would like to go in.

The Whole Nine Yards

With a full nine inches of touch screen real estate and integrated full motion video, multi-window videoconferencing is easy to see and control.

MODERO VIEWPOINT 9000i | 9" WIDESCREEN



9" modero

GIANT CONTROL FROM THE TINY WONDER

Touch Panel engine comes standard in every Modero Touch Panel, including the incredibly svelte 4.3 inch tiny wonder – the NXD-430 and NXD-435. It's small enough to fit in the palm of your hand but most handy performing an endless array of domestic duties when wall-mounted in entryways, kitchens, bathrooms and hallways or on the tabletops of nightstands and coffee tables. From arming the alarm and checking the weather to pausing a movie and warming the spa, if there's a need for inconspicuous control, there's an ideal mounting spot for the NXD-430/435.



Child's Play

Navigating the NXD-430P is just plain easy. Whether you want to watch a movie, pause the DVR, dim the lights, adjust the temperature or listen to music - it's all just a touch away from any of the activity buttons on the side of the screen.



Brilliant Sounds

The ability to access your iPod, Satellite Radio and CDs from anywhere in your home is simple using the NXD-430/435.

MODERO NXD-435P | 4.3"

Pause and Play

During a business presentation you can easily pause playback of a recorded newscast right from your podium.



Cool to the Touch

The convenience of external buttons lets you quickly adjust the AC up a degree to keep your home comfortable and energy efficient.

MODERO NXD-435 | 4.3" WIDESCREEN

4.3" modero

AN EDUCATOR'S ESSENTIAL RESOURCE

Looks definitely can be deceiving. While it measures just five inches across and is extremely compact and discreet, the Modero 500i plays a huge role as a time-saver and stress reducer for professors and administrators of today's technically challenging classrooms, auditoriums and distance learning centers. After dimming the lights, turning on the microphone, starting the projector, lowering the projection screen, starting the media and adjusting the volume, who has time to teach? However, all it takes is a single button and all of this plus any necessary room adjustments even including temperature and window shades can be made in an instant. And you can intercom your assistant to bring you the papers you forgot, right from the touch panel. It's no surprise why schools of higher learning are continually referring to the Modero 500i as the tiny wonder.



At A Glance Scheduling

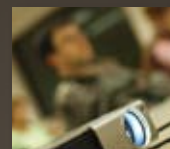
The 5" Modero with Portrait Bezel Kit is ideal for vertically displaying meeting room schedules and even scheduling a room, right from the panel.



Ring My Bell

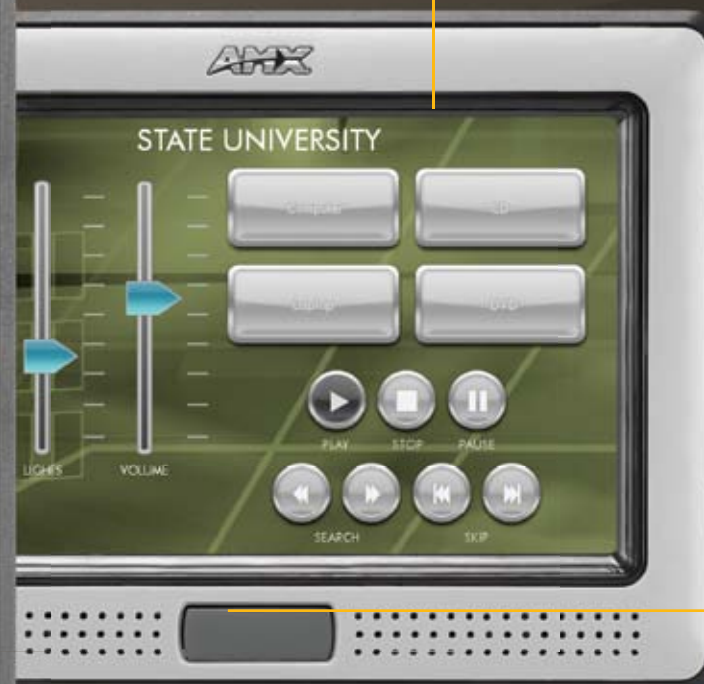
Need to interrupt a meeting to ask someone a question? Just touch "Ring Doorbell" to alert meeting attendees.

MODERO 500i | 5" WIDESCREEN



Simple Source Selection

Locating, selecting and changing the source for the projector or video display is typically one of your most used activities. Large, clear buttons make it easy.



Motion Activated

The innovative motion sensor is perfect for bringing the panel out of sleep mode as the lecturer is reaching to bring the lights back up following the showing of a film.

MODERO 500i | 5" WIDESCREEN

5" modero

BRINGING THE WORLD TOGETHER

As homes continue to grow larger, it becomes increasingly difficult to keep your family members connected. The Modero 700Vi with integrated intercom brings everyone closer. Want to ask your husband if he'd like to catch a movie later? Simply press "STUDY" to connect with him. Need to alert your family in an emergency? Broadcast a message to all of your touch panels including those in sleep mode, to direct your family of the exit strategy. Working on an important paper and need some peace and quiet? Just put your panel into privacy mode and you won't be disturbed. And for the ultimate convenience, you can also easily add local, long distance and international phone calling capability to any VoIP-enabled touch panel. The Modero 700Vi – connecting families across the home and across the globe.



Touch Your Destination

Select from any touch panel throughout your home to conduct a panel-to-panel intercom call or select all panels for a broadcast message.



Paging All Panels

Simply press, "Page All" and you'll be connected with all your touch panels at once, which can be especially useful to share instructions in an emergency situation.



Handsfree Monitoring

The monitoring feature is ideal to give parents the ability to activate nursery and playroom panel microphones. Individual monitor status is available for each panel.



What's The Status?

The master intercom status page provides an intercom overview of all panels including whether each panel is on a call or locked into privacy mode to prevent disruptions.

MODERO 700Vi | 7" WIDESCREEN



7" modero

A TRUE LIFE OF LUXURY AWAITS

The myriad of systems that run your home and make it more comfortable can be time consuming to manage. Introducing the Modero 1000Vi, it's ready to handle all of the cumbersome details and includes integrated digital intercom and telephone capability. Whether you want to warm up the spa for a late-night swim, turn off your sprinklers in a rainstorm or put your home in "VACATION MODE" to maximize energy efficiency and keep it secure while you're away, it's all handled behind the scenes. And to make sure you are always prepared for whatever Mother Nature dishes out; current weather conditions, as well as time, date and temperature are always conveniently displayed, courtesy of AMX iWeather. A true life of luxury awaits you. It's time to discover the Modero 1000Vi.



Let There Be Light

In addition to turning on/off your patio lights, you can also activate pool and spa lights and simultaneously initiate a timer so you never have to remember to turn them off.



105 Degrees Please

There's nothing more relaxing than stepping into the spa after a long day and there's nothing more convenient than warming it up from any touch panel in your home.



Sunny, Rainy Or Windy?

You'll know in an instant with easily recognizable visual weather icons as well as time, date and current temperature provided by AMX iWeather.



Need More Towels?

With your touch panel digital intercom network, you are automatically connected to all your other VoIP-enabled touch panels so if you need another towel from inside, just ask.

MODERO 1000Vi | 10" WIDESCREEN



10" modero

PICTURE PERFECT

AMX Touch Panels are designed with one goal in mind – to simplify life so that you can spend more time enjoying it. Our 12” Modero Standard is no exception and whether sitting on your bedside table or wall-mounted in the kitchen, you’ll have one-touch access to your home’s environmental, entertainment, and communications systems - all from a single interface. In addition to control, automation and multimedia, Modero Touch Panels also feature the ability to turn your panel into a digital canvas to display photos, artwork or a combination of images with our popular PictureFrame application. Oh and wouldn’t it be nice to be able to check the traffic report on your way out the door? No problem, live traffic updates and camera views are also instantly available. Discover the life-changing possibilities that await you with the 12” Modero Standard.



Home View

To see what AMXhome music sources are being used in which rooms of your home and make adjustments simply access your AMXhome Floor Plan in Room Control.



Music To Your Ears

AMXhome gives you full control of your iPod, CD Player and Music Servers so you can access your favorite music and have one-touch access to playlists, artists, albums and songs.

Jump Around

Want to arm your security system or turn off all the lights in your home at once? Easily jump to your most used activities and device controls in just a touch no matter what activity you're in on your touch panel.



Weather At Your Fingertips

When you want to know the temperature, current conditions as well as a five-day forecast – it's all conveniently at your fingertips.



MODERO 1200 | 12" STANDARD



12" modero

IT'S THE WAY MEETINGS GET DONE

Finding an available meeting room can be both daunting and frustrating, which is why the 15" Modero Standard and AMX MeetingManager software have become a popular choice for simplifying scheduling woes. Inside the conference room, MeetingManager is continually managing all of the room's connected audiovisual gear as well as the room's hourly, daily and monthly schedule of reservations. In the event of a faulty projector or other issue, a handy "HELP" button is ideal for contacting the IT help desk for assistance. The 15" Modero Standard is also great when wall-mounted outside the room to show who's got the room, for how long and when it will be free. Need to interrupt for a question? Just push the virtual doorbell button to alert attendees. The 15" Modero Standard - bringing the world together, one meeting room at a time.



Find Out If The Room's Available
At a glance, anyone can view the panel's daily, weekly or monthly schedule to know who's got the room and when it will be available.



Help's On The Way
When you're right in the middle of a big presentation and your projector goes on the fritz, having someone address the issue quickly is crucial. Just press "Help" and IT is notified.



Safe And Secure
MeetingManager is not only great for scheduling, it can keep your assets secure. Using the Anterus RFID system, you can tag all your equipment and track it in MeetingManager.

Do Not Disturb
When you've got a critical deadline to meet and every second of your meeting counts, simply press "Do Not Disturb" from your interior panel and anyone approaching your outer door panel will clearly see a notice informing them of the situation.

MODERO 1500 | 15" STANDARD



15" modero

SIMPLY THE BEST

The executive boardroom is where crucial decisions affect the success, direction and life blood of any company. Chief executives have enough on their plates without having to worry about managing technologically. The flagship of the AMX Touch Panel family boasts an incredible 17 inches of on-screen real estate to display just about any combination of multimedia windows and device controls. During the monthly videoconference, your company's CEO can interface with four vice-presidents at once and still have plenty of room to utilize AMX TakeNote and Computer Control applications to illustrate his talking points onscreen by annotating over a PowerPoint slide being pulled from his PC. The 17" Modero Widescreen – would you trust your company's livelihood to be supported by anything but the best?



Windows To The World

Because of the large screen size, you have plenty of room to view several video windows at once, which is especially helpful during videoconferencing.



Come Together

Whether you need to bring three or thirty people together for a videoconference, the conferencing is simple with direct number entry and quick phone book access.

Illustrate Your Point

With TakeNote, your Touch Panel becomes a virtual notepad giving you the ability to jot notes, draw illustrations or whatever you need to scribble to make your point.

Virtual Desktop

When you need a document, presentation or even Internet Access, Computer Control is ideal for putting you in direct control of your PC's Desktop and all of its applications.



MODERO 1700 | 17" WIDESCREEN



17" modero

MVP-5200i	Black White	•	•	6 hr			•		•		•		•		•
MVP-5150	Black	Beep		6 hr											•
MVP-5100	Black	Beep		6 hr											•
MVP-8400i	Silver	•	o	4 hr			•		•	o	•	o	•		•
MVP-8400	Silver	•	o	4 hr			•				•	o	•		•
MVP-9000i	Black White	•	•	5 hr			•		•	•	•	•	•	•	•
NXD-430/435	Black White	Beep					*						•	o	
NXD-500i	Silver	•					•		•		•	•		o	
NXT-CV7	Silver	•					•	•			•	•			
NXD-700Vi	Silver	•					•	•	•	o	•	•	o		
NXT-CV10 & CV10/PB	Silver	•					•	•			•	•	o		
NXD-1000Vi	Silver	•					•	•	•	o	•	•	o		
NXT- & NXD-1200V	Silver	•					•	•			•	•			
NXT- & NXD-1200VG	Silver	•				o	•	•	•		•	•			
NXT- & NXD-1500VG	Silver	•				o	•	•	•		•	•			
NXT- & NXD-1700VG	Silver	•				o	•	•	•		•	•			
<ul style="list-style-type: none"> • = Standard o = Optional 	Colors	Speakers/Microphone	KickStand	Battery Life	Optional RGB Kit for Component/RGB Connectivity	Streaming Video Connectivity (MPEG2 and MPEG4)	Dynamic Images, DynaMo (Motion JPEG, 15fps)	Analog Audio and Composite Video using NXA-AVB/ETHERNET	VoIP Intercom with G.711 Voice Quality	SIP Telephone	MP3 and WAV File Playback	USB Keyboard/Mouse	External Buttons/Navigation	Portrait Mode or Table Top Stand	Stylus
	Design Features				Audio/Video Capabilities							User Input			

•	•	•	•	•	•	•		•	•	•	•	○	○	○			128	256
		•		•	•	•		•	•	•	•	○	○	○			128	256
				•	•							○	○	○			128	256
•	•	•	•	•	•	•		•	•	•		○	○	○			128	512
•	•	•	•	•	•	•		•	•	•		○	○	○			128	512
•	•	•	•	•	•	•	•	•	•	•	•	•	•	•			256	2G
•		•		•		•	•							○	○		128	256
•	•	•	•	•		•	•							○	○		128	512
•	•	•	•	•		•	•	○	○	○							64	512
•	•	•	•	•		•	•	○	○	○				○	○		64	512
•	•	•	•	•		•	•	○	○	○							64	512
•	•	•	•	•		•	•	○	○	○				○	○		64	512
•	•	•	•	•		•	•	○	○			○	○	○	○	○	256	512
•	•	•	•	•		•	•	○	○			○	○	○	○	○	256	512
•	•	•	•	•		•	•	○	○			○	○	○	○	○	256	512
•	•	•	•	•		•	•	○	○			○	○	○	○	○	256	512
ComputerControl	TakeNote	Web Control	PictureFrame	Resource Management Suite™	IR	Feedback	10/100 Ethernet	802.11g w/ Internal Antenna	Network Security - WEP 64, WEP 128	Network Security - WPA, WPA2, EAP-TLS, EAP-TTLS, PEAP,	Network Security - LEAP, FAST	Table Top & Table Dock/Charging Station	Wall/Flush Mount & Wall Dock/Charging Station	Wall Conduit Box	Rack Mount Kit	VESA Mount Kit	Standard SDRAM Memory (MB)	Standard FLASH Storage (MB)
Software Capabilities					Control Interfaces							Mounting				Memory/ FLASH		

comparisonmodero



3000 RESEARCH DRIVE, RICHARDSON, TX 75082 • 800.222.0193 • 469.624.8000 • +1.469.624.7400 • 469.624.7153 fax • www.amx.com