

HydraPort Connection Ports..... 88 – 96
HydraPort Connection Modules 97 – 103
HydraPort Grommets..... 104
HydraPort Accessories 105 – 107

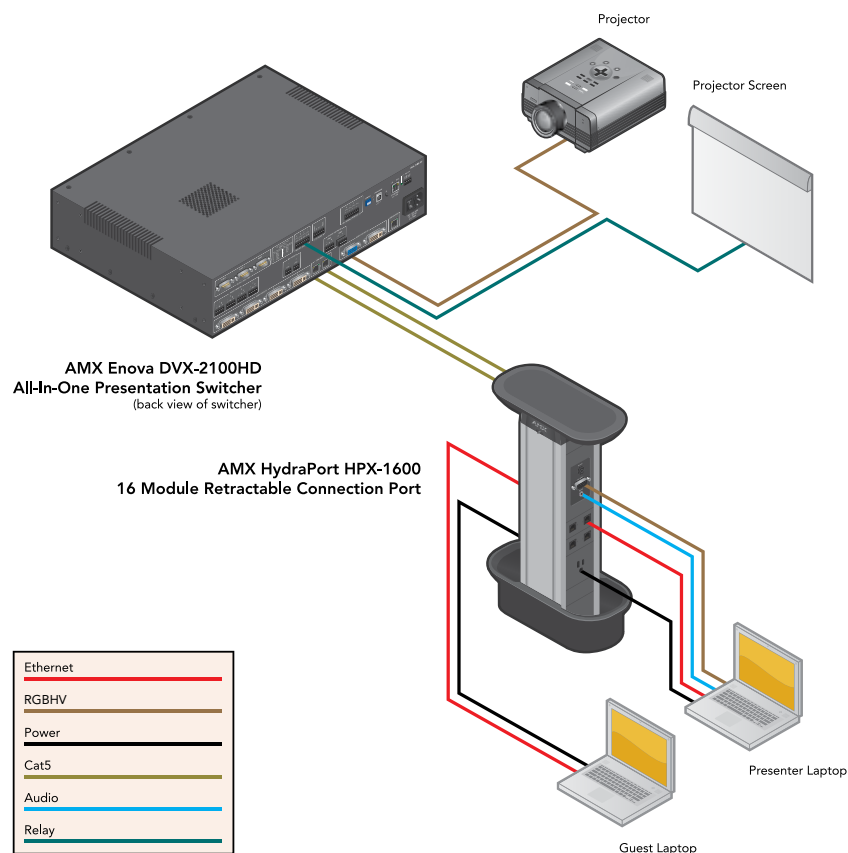
ARCHITECTURAL CONNECTIVITY

KEEPING TOTAL ENVIRONMENT CONNECTED

In the Room or Down the Hall, Always Maintain a Clean, Clear Connection

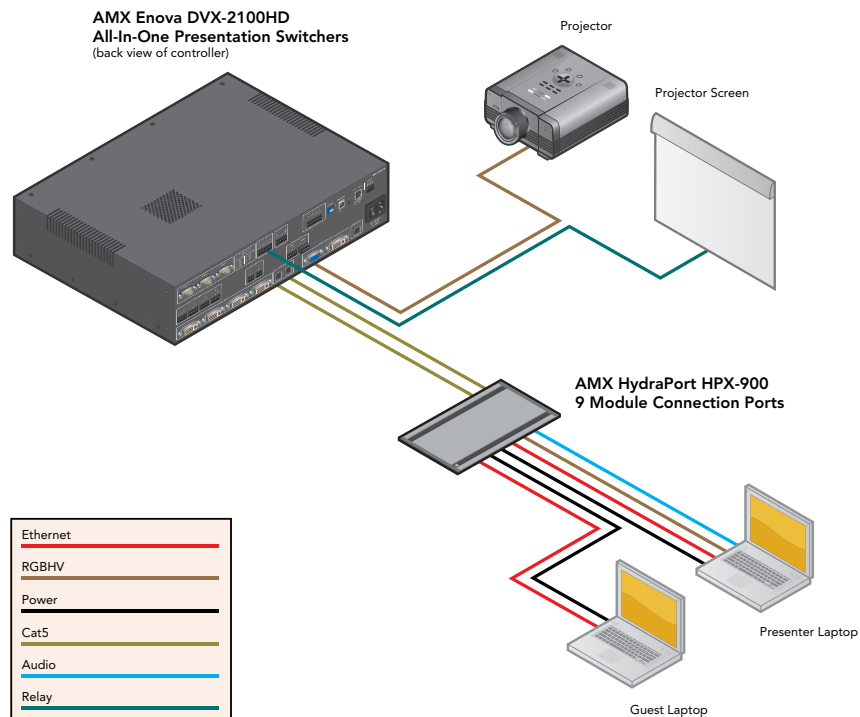
HydraPort Connection Ports, modules, grommets and accessories are all essential components of a unified Architectural Connectivity system. Administrators, presenters and users all need a way to connect their presentation devices and AV equipment to interface with the permanently installed room equipment in boardrooms, conference rooms, meeting rooms and auditoriums. These environment accessories offer them a way to connect in a clean, concise and professional manner.

SYSTEM DIAGRAM





**HydraPort Preview:****Build It Your Way**

Building your HydraPort couldn't be any easier with the completely customizable online HydraPort Preview tool that allows you to mix and match all of the available power, data and AV modules to build a perfect HydraPort every time. Check it out at www.amx.com/hydraportpreview.



HPX-600

6 Module Connection Ports

	Black Anodized	(FG560-01-BL)
	Brushed Aluminum	(FG560-01-SL)



OVERVIEW

With space for up to six modules, the HPX-600 allows you to elegantly connect mobile devices at your desk, lectern or table using the most beautiful connectivity system ever developed. This sleek solution supports pass-through connectors for audio, video, Ethernet, USB and power plus control. The modular assembly makes it easy to change connections as needs evolve, and makes HydraPort® future proof for connection types that have yet to be developed. The elegant, flush-mount design conveniently opens in both directions providing a clean, unobtrusive look.

COMMON APPLICATIONS

The HPX-600 is perfect for conference rooms, classrooms or auditoriums where users need a simple, convenient way to connect devices power, Ethernet, USB, audio, and video.

FEATURES

- **Modular Design is Future Proof** – Features an assembly with the flexibility to change the modules to meet current and future needs
- **Variety of Sizes for All Types of Applications** – The HPX-600 accommodates six module units. Use the HydraPort Connection Preview Application to determine the size needed, based on the connection modules desired
- **Elegant and Unobtrusive** – Flush-mount design installs cleanly into a lectern or table and the lid conveniently opens in both directions providing a clean look
- **No Electrician Required** – HydraPort power modules can be connected directly to a wall or floor outlet eliminating the need for an electrician
- **Control The Room** – Add Metreau® or Novara® Keypad modules to control AV devices, lighting or shades as well as to initiate pre-programmed events
- **Anodized Aluminum** – These stylish, low profile connectivity ports have the same contemporary brushed aluminum enclosure as the higher-end office furniture manufacturers at the same price as most competitive painted metal models



- **Updated Web HydraPort Connection Preview Application** – Now you can select from all four connection port bases and even switch from one to the other as you build your module set. Plus you can still 'Save, Load and/or Print' every configuration

DEALER BENEFITS

- **Flexible Design** – The variety of chassis sizes and modules makes it easy to customize a connection port for every type of customer need using the HydraPort Connection Preview Application
- **Simplify the Installation** – The HydraPort series is easy to install, and even easier to change connection types since the modules slide easily into the Chassis
- **No Electrician Required** – HydraPort power modules can be connected directly to a wall or floor outlet eliminating the need for an electrician

CUSTOMER BENEFITS

- **Modular Design is Future Proof** – Features an assembly that allows users to populate the Chassis with different connection types that meet their current and future needs
- **Convenient Connections** – The HydraPort makes it easy for users to connect mobile devices such as laptops to in-room equipment and power plus Ethernet without having to run long cables
- **Elegant and Unobtrusive** – Flush-mount design conveniently opens in both directions providing a clean look



BULLSEYE TARGET PRODUCT

This is a Target Product as defined in the U.S. BullsEye Partnership Program. Participating AMX Dealers can be rewarded for purchasing Target Products as a % of their total annual net revenue.



WATCH THE VIDEO

See the new additions to our HydraPort product line live from InfoComm 2011 by watching our video profile on YouTube:
www.youtube.com/user/AMXtalk?blend=2&ob=5#p/u/1/cnTtVV5GJ-4



TRAINING AVAILABLE

For important installation, configuration and programming techniques, AMX University training is available. Just visit www.amx.com/training

SPECIFICATIONS

DIMENSIONS (HWD)

- Max above mounting surface: 5/16" (7.3mm) with lid open, 1/8" (3mm) with lid closed
- Max below mounting surface: 6 15/16" (175 mm)
- Mounting surface footprint: 8 3/16" x 5 7/16" (208mm x 138mm)
- Min. mounting surface thickness: 3/4" (19 mm)
- Max mounting surface thickness: 2" (51 mm)
- Table Cutout Dimensions: 7.64" x 4.84" (194mm x 123mm)

NUMBER OF MODULES SUPPORTED

- Module sizes are provided in "HydraPort units". Modules range in size from 1/2 to 4 1/2 HydraPort units.
- The HPX-600 supports up to 6 total single-space modules.

MODULES AVAILABLE

Universal, Black Chassis with Black End Caps (FGxxx-xx)

ENCLOSURE

Black finish metal frame and lid with black plastic end caps.

RECOMMENDED ACCESSORIES

DESCRIPTION



PART

PAGE

HPX-AV101-HDMI	Single HDMI Module	(FG552-24)	97
HPX-AV101-DVI	Single DVI Module	(FG552-23)	97
HPX-AV101-DVI+A	DVI with Stereo Module with Integrated Cables	(FG552-22)	97
HPX-AV100-CS+A	Composite with Stereo Module	(FG552-10)	97
HPX-AV101-RGB+A	RGB with Stereo Module with Pre-Attached Cables	(FG552-21)	98
HPX-AV100-RGB+A	RGBHV with Stereo Module	(FG552-11)	97
HPX-C5400-CS+A	Composite with Stereo UPX Cat5 Kit with HPX Carrier Module	(FG552-50-BL-K)	99
HPX-C5400-VGA+A	RGBHV with Stereo UPX Cat5 Kit with HPX Carrier Module	(FG552-51-BL-K)	99
HPX-C5400-CN+A	Component with Stereo UPX Cat5 Kit with HPX Carrier Module	(FG552-52-BL-K)	98
HPX-N100-RJ45	Single RJ-45 Module	(FG553-01)	99
HPX-N102-RJ45	Dual RJ-45 Module	(FG553-02)	100
HPX-N100-USB	Single USB Module	(FG553-11)	99
HPX-CPT200-W	HydraPort Cable Pass-Thru Module	(FG562-41)	99
HPX-U100-BTN	Single Button Module with LED	(FG554-01)	101
HPX-U200-MOD	Modero Connection Module	(FG554-81)	101
HPX-U400-MET-6N	Metreau 6-Button Keypad Kit with HPX Carrier	(FG554-11-BL-K)	102
HPX-U400-MET-7	Metreau 7-Button Keypad Kit with HPX Carrier	(FG554-13-BL-K)	102
HPX-U400-MET-13	Metreau 13-Button Keypad Kit with HPX Carrier	(FG554-12-BL-K)	102
HPX-U400-R-MET-6N	Metreau 6-Button Keypad Ramp Mount Kit	(FG564-11-BL)	103
HPX-U400-R-MET-7	Metreau 7-Button Keypad Ramp Mount Kit	(FG564-13-BL)	103
HPX-U400-R-MET-13	Metreau 13-Button Keypad Ramp Mount Kit	(FG564-12-BL)	103
HPX-U400-CP-1008	Novara 8-Button ControlPad (US) Module	(FG554-71-BL)	102
HPX-U400-SP-08-AX	Novara 8-Button Keypad with AxLink (US) Module	(FG554-51-BL)	103
HPX-P200-PC-US	Power Outlet (US) Module with Cord	(FG561-01)	100
HPX-P250-PC-UK	Power Outlet (UK) Module with Cord	(FG561-11)	101
HPX-P200-PC-EU	Power Outlet (EU) Module with Cord	(FG561-21)	100
HPX-P200-PC-AU	Power Outlet (AU) Module with Cord	(FG561-31)	100
HPX-P250-PC-IN	Power Outlet (IN) Module with Cord	(FG561-41)	101
HPX-B050	1/2 M Blank Panel	(FG558-01)	98
HPX-B100	1 M Blank Panel	(FG558-02)	98
HPX-B200	2 M Blank Panel	(FG558-03)	98
HPX-B050-L	1/2 M Custom Label Panel	(FG558-11)	98
HPX-B100-L	1 M Custom Label Panel	(FG558-12)	98

HPX-900

9 Module Connection Ports

	Black Anodized	(FG560-02-BL)
	Brushed Aluminum	(FG560-02-SL)



OVERVIEW

With space for up to nine modules, the HPX-900 allows you to elegantly connect mobile devices at your desk, lectern or table using the most beautiful connectivity system ever developed. This sleek solution supports pass-through connectors for audio, video, Ethernet, USB and power plus control. The modular assembly makes it easy to change connections as needs evolve, and makes HydraPort® future proof for connection types that have yet to be developed. The elegant, flush-mount design conveniently opens in both directions providing a clean, unobtrusive look.

COMMON APPLICATIONS

The HPX-900 is perfect for conference rooms, classrooms or auditoriums where users need a simple, convenient way to connect devices power, Ethernet, USB, audio, and video.

FEATURES

- **Modular Design is Future Proof** – Features an assembly with the flexibility to change the modules to meet current and future needs
- **Variety of Sizes for All Types of Applications** – The HPX-900 accommodates nine module units. Use the HydraPort Connection Preview Application to determine the size needed, based on the connection modules desired
- **Elegant and Unobtrusive** – Flush-mount design installs cleanly into a lectern or table and the lid conveniently opens in both directions providing a clean look
- **No Electrician Required** – HydraPort power modules can be connected directly to a wall or floor outlet eliminating the need for an electrician
- **Control The Room** – Add Metreau® or Novara® Keypad modules to control AV devices, lighting or shades as well as to initiate pre-programmed events
- **Anodized Aluminum** – These stylish, low profile connectivity ports have the same contemporary brushed aluminum enclosure as the higher-end office furniture manufacturers at the same price as most competitive painted metal models



- **Updated Web HydraPort Connection Preview Application** – Now you can select from all four connection port bases and even switch from one to the other as you build your module set. Plus you can still 'Save, Load and/or Print' every configuration

DEALER BENEFITS

- **Flexible Design** – The variety of chassis sizes and modules makes it easy to customize a connection port for every type of customer need using the HydraPort Connection Preview Application
- **Simplify the Installation** – The HydraPort series is easy to install, and even easier to change connection types since the modules slide easily into the Chassis
- **No Electrician Required** – HydraPort power modules can be connected directly to a wall or floor outlet eliminating the need for an electrician

CUSTOMER BENEFITS

- **Modular Design is Future Proof** – Features an assembly that allows users to populate the Chassis with different connection types that meet their current and future needs
- **Convenient Connections** – The HydraPort makes it easy for users to connect mobile devices such as laptops to in-room equipment and power plus Ethernet without having to run long cables
- **Elegant and Unobtrusive** – Flush-mount design conveniently opens in both directions providing a clean look



BULLSEYE TARGET PRODUCT

This is a Target Product as defined in the U.S. BullsEye Partnership Program. Participating AMX Dealers can be rewarded for purchasing Target Products as a % of their total annual net revenue.



WATCH THE VIDEO

See the new additions to our HydraPort product line live from InfoComm 2011 by watching our video profile on YouTube:
www.youtube.com/user/AMXtalk?blend=2&ob=5#p/u/1/cnTtVV5GJ-4



TRAINING AVAILABLE

For important installation, configuration and programming techniques, AMX University training is available. Just visit www.amx.com/training

SPECIFICATIONS

DIMENSIONS (HWD)

- Max above mounting surface: 5/16" (7.3mm) with lid open, 1/8" (3mm) with lid closed
- Max below mounting surface: 6 15/16" (175 mm)
- Mounting surface footprint: 11 5/32" x 5 7/16" (283mm x 138mm)
- Min. mounting surface thickness: 3/4" (19 mm)
- Max mounting surface thickness: 2" (51 mm)
- Table Cutout Dimensions: 10.59" x 4.84" (269mm x 123mm)

NUMBER OF MODULES SUPPORTED

- Module sizes are provided in "HydraPort units". Modules range in size from 1/2 to 4 1/2 HydraPort units.
- The HPX-900 supports up to 9 total single-space modules.

MODULES AVAILABLE

Universal, Black Chassis with Black End Caps (FGxxx-xx)

ENCLOSURE

Black finish metal frame and lid with black plastic end caps.

RECOMMENDED ACCESSORIES

DESCRIPTION

PART

PAGE

HPX-AV101-HDMI	Single HDMI Module	(FG552-24)	97
HPX-AV101-DVI	Single DVI Module	(FG552-23)	97
HPX-AV101-DVI+A	DVI with Stereo Module with Integrated Cables	(FG552-22)	97
HPX-AV100-CS+A	Composite with Stereo Module	(FG552-10)	97
HPX-AV101-RGB+A	RGB with Stereo Module with Pre-Attached Cables	(FG552-21)	98
HPX-AV100-RGB+A	RGBHV with Stereo Module	(FG552-11)	97
HPX-C5400-CS+A	Composite with Stereo UPX Cat5 Kit with HPX Carrier Module	(FG552-50-BL-K)	99
HPX-C5400-VGA+A	RGBHV with Stereo UPX Cat5 Kit with HPX Carrier Module	(FG552-51-BL-K)	99
HPX-C5400-CN+A	Component with Stereo UPX Cat5 Kit with HPX Carrier Module	(FG552-52-BL-K)	98
HPX-N100-RJ45	Single RJ-45 Module	(FG553-01)	99
HPX-N102-RJ45	Dual RJ-45 Module	(FG553-02)	100
HPX-N100-USB	Single USB Module	(FG553-11)	99
HPX-CPT200-W	HydraPort Cable Pass-Thru Module	(FG562-41)	99
HPX-U100-BTN	Single Button Module with LED	(FG554-01)	101
HPX-U200-MOD	Modero Connection Module	(FG554-81)	101
HPX-U400-MET-6N	Metreau 6-Button Keypad Kit with HPX Carrier	(FG554-11-BL-K)	102
HPX-U400-MET-7	Metreau 7-Button Keypad Kit with HPX Carrier	(FG554-13-BL-K)	102
HPX-U400-MET-13	Metreau 13-Button Keypad Kit with HPX Carrier	(FG554-12-BL-K)	102
HPX-U400-R-MET-6N	Metreau 6-Button Keypad Ramp Mount Kit	(FG564-11-BL)	103
HPX-U400-R-MET-7	Metreau 7-Button Keypad Ramp Mount Kit	(FG564-13-BL)	103
HPX-U400-R-MET-13	Metreau 13-Button Keypad Ramp Mount Kit	(FG564-12-BL)	103
HPX-U400-CP-1008	Novara 8-Button ControlPad (US) Module	(FG554-71-BL)	102
HPX-U400-SP-08-AX	Novara 8-Button Keypad with AxLink (US) Module	(FG554-51-BL)	103
HPX-P200-PC-US	Power Outlet (US) Module with Cord	(FG561-01)	100
HPX-P250-PC-UK	Power Outlet (UK) Module with Cord	(FG561-11)	101
HPX-P200-PC-EU	Power Outlet (EU) Module with Cord	(FG561-21)	100
HPX-P200-PC-AU	Power Outlet (AU) Module with Cord	(FG561-31)	100
HPX-P250-PC-IN	Power Outlet (IN) Module with Cord	(FG561-41)	101
HPX-B050	1/2 M Blank Panel	(FG558-01)	98
HPX-B100	1 M Blank Panel	(FG558-02)	98
HPX-B200	2 M Blank Panel	(FG558-03)	98
HPX-B050-L	1/2 M Custom Label Panel	(FG558-11)	98
HPX-B100-L	1 M Custom Label Panel	(FG558-12)	98

HPX-1200

12 Module Connection Ports

	Black Anodized	(FG560-03-BL)
	Brushed Aluminum	(FG560-03-SL)



OVERVIEW

With space for up to 12 modules, the HPX-1200 allows you to elegantly connect mobile devices at your desk, lectern or table using the most beautiful connectivity system ever developed. This sleek solution supports pass-through connectors for audio, video, Ethernet, USB and power plus control. The modular assembly makes it easy to change connections as needs evolve, and makes HydraPort® future proof for connection types that have yet to be developed. The elegant, flush-mount design conveniently opens in both directions providing a clean, unobtrusive look.

COMMON APPLICATIONS

The HPX-1200 is perfect for conference rooms, classrooms or auditoriums where users need a simple, convenient way to connect devices power, Ethernet, USB, audio, and video.

FEATURES

- **Modular Design is Future Proof** – Features an assembly with the flexibility to change the modules to meet current and future needs
- **Variety of Sizes for All Types of Applications** – The HPX-1200 accommodates 12 module units. Use the HydraPort Connection Preview Application to determine the size needed, based on the connection modules desired
- **Elegant and Unobtrusive** – Flush-mount design installs cleanly into a lectern or table and the lid conveniently opens in both directions providing a clean look
- **No Electrician Required** – HydraPort power modules can be connected directly to a wall or floor outlet eliminating the need for an electrician
- **Control The Room** – Add Metreau® or Novara® Keypad modules to control AV devices, lighting or shades as well as to initiate pre-programmed events
- **Anodized Aluminum** – These stylish, low profile connectivity ports have the same contemporary brushed aluminum enclosure as the higher-end office furniture manufacturers at the same price as most competitive painted metal models



- **Updated Web HydraPort Connection Preview Application** – Now you can select from all four connection port bases and even switch from one to the other as you build your module set. Plus you can still 'Save, Load and/or Print' every configuration

DEALER BENEFITS

- **Flexible Design** – The variety of chassis sizes and modules makes it easy to customize a connection port for every type of customer need using the HydraPort Connection Preview Application
- **Simplify the Installation** – The HydraPort series is easy to install, and even easier to change connection types since the modules slide easily into the Chassis
- **No Electrician Required** – HydraPort power modules can be connected directly to a wall or floor outlet eliminating the need for an electrician

CUSTOMER BENEFITS

- **Modular Design is Future Proof** – Features an assembly that allows users to populate the Chassis with different connection types that meet their current and future needs
- **Convenient Connections** – The HydraPort makes it easy for users to connect mobile devices such as laptops to in-room equipment and power plus Ethernet without having to run long cables
- **Elegant and Unobtrusive** – Flush-mount design conveniently opens in both directions providing a clean look



BULLSEYE TARGET PRODUCT

This is a Target Product as defined in the U.S. BullsEye Partnership Program. Participating AMX Dealers can be rewarded for purchasing Target Products as a % of their total annual net revenue.



WATCH THE VIDEO

See the new additions to our HydraPort product line live from InfoComm 2011 by watching our video profile on YouTube:
www.youtube.com/user/AMXtalk?blend=2&ob=5#p/u/1/cnTtVV5GJ-4



TRAINING AVAILABLE

For important installation, configuration and programming techniques, AMX University training is available. Just visit www.amx.com/training

SPECIFICATIONS

DIMENSIONS (HWD)

- Max above mounting surface: 5/16" (7.3mm) with lid open, 1/8" (3mm) with lid closed
- Max below mounting surface: 6 15/16" (175 mm)
- Mounting surface footprint: 14 3/32" x 5 7/16" (358mm x 138mm)
- Min. mounting surface thickness: 3/4" (19 mm)
- Max mounting surface thickness: 2" (51 mm)
- Table Cutout Dimensions: 13.54" x 4.84" (344mm x 123mm)

NUMBER OF MODULES SUPPORTED

- Module sizes are provided in "HydraPort units". Modules range in size from 1/2 to 4 1/2 HydraPort units.
- The HPX-1200 supports up to 12 total single-space modules.

MODULES AVAILABLE

Universal, Black Chassis with Black End Caps (FGxxx-xx)

ENCLOSURE

Black finish metal frame and lid with black plastic end caps.

RECOMMENDED ACCESSORIES

DESCRIPTION

PART

PAGE

HPX-AV101-HDMI	Single HDMI Module	(FG552-24)	97
HPX-AV101-DVI	Single DVI Module	(FG552-23)	97
HPX-AV101-DVI+A	DVI with Stereo Module with Integrated Cables	(FG552-22)	97
HPX-AV100-CS+A	Composite with Stereo Module	(FG552-10)	97
HPX-AV101-RGB+A	RGB with Stereo Module with Pre-Attached Cables	(FG552-21)	98
HPX-AV100-RGB+A	RGBHV with Stereo Module	(FG552-11)	97
HPX-C5400-CS+A	Composite with Stereo UPX Cat5 Kit with HPX Carrier Module	(FG552-50-BL-K)	99
HPX-C5400-VGA+A	RGBHV with Stereo UPX Cat5 Kit with HPX Carrier Module	(FG552-51-BL-K)	99
HPX-C5400-CN+A	Component with Stereo UPX Cat5 Kit with HPX Carrier Module	(FG552-52-BL-K)	98
HPX-N100-RJ45	Single RJ-45 Module	(FG553-01)	99
HPX-N102-RJ45	Dual RJ-45 Module	(FG553-02)	100
HPX-N100-USB	Single USB Module	(FG553-11)	99
HPX-CPT200-W	HydraPort Cable Pass-Thru Module	(FG562-41)	99
HPX-U100-BTN	Single Button Module with LED	(FG554-01)	101
HPX-U200-MOD	Modero Connection Module	(FG554-81)	101
HPX-U400-MET-6N	Metreau 6-Button Keypad Kit with HPX Carrier	(FG554-11-BL-K)	102
HPX-U400-MET-7	Metreau 7-Button Keypad Kit with HPX Carrier	(FG554-13-BL-K)	102
HPX-U400-MET-13	Metreau 13-Button Keypad Kit with HPX Carrier	(FG554-12-BL-K)	102
HPX-U400-R-MET-6N	Metreau 6-Button Keypad Ramp Mount Kit	(FG564-11-BL)	103
HPX-U400-R-MET-7	Metreau 7-Button Keypad Ramp Mount Kit	(FG564-13-BL)	103
HPX-U400-R-MET-13	Metreau 13-Button Keypad Ramp Mount Kit	(FG564-12-BL)	103
HPX-U400-CP-1008	Novara 8-Button ControlPad (US) Module	(FG554-71-BL)	102
HPX-U400-SP-08-AX	Novara 8-Button Keypad with AxLink (US) Module	(FG554-51-BL)	103
HPX-P200-PC-US	Power Outlet (US) Module with Cord	(FG561-01)	100
HPX-P250-PC-UK	Power Outlet (UK) Module with Cord	(FG561-11)	101
HPX-P200-PC-EU	Power Outlet (EU) Module with Cord	(FG561-21)	100
HPX-P200-PC-AU	Power Outlet (AU) Module with Cord	(FG561-31)	100
HPX-P250-PC-IN	Power Outlet (IN) Module with Cord	(FG561-41)	101
HPX-B050	1/2 M Blank Panel	(FG558-01)	98
HPX-B100	1 M Blank Panel	(FG558-02)	98
HPX-B200	2 M Blank Panel	(FG558-03)	98
HPX-B050-L	1/2 M Custom Label Panel	(FG558-11)	98
HPX-B100-L	1 M Custom Label Panel	(FG558-12)	98

HPX-1600

16 Module Retractable Connection Ports

Black	US Version	(FG550-01-BL)
Silver	US Version	(FG550-01-SL)
Black	International Version	(FG550-BL)
Silver	International Version	(FG550-SL)



OVERVIEW

HydraPort is the first completely modular, retractable cable connection system built to accommodate the diverse connection needs of conference and meeting room visitors. This sleek, elegant, ergonomic design features a retractable base station that smoothly rises to expose device connections and recedes back down and conceals the typical cable mess that can distract from the business at hand. All this while each cable stays connected.

COMMON APPLICATION

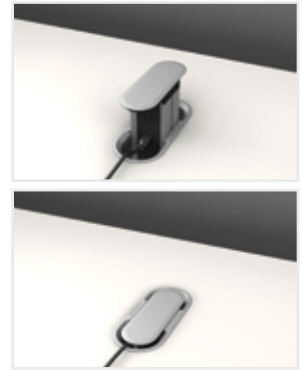
Boardrooms, conference rooms, meeting rooms or auditoriums where equipment is permanently installed in the room and users must connect to that equipment from a conference table or lectern.

WHAT'S NEW

- Digital Video pass-through modules – individual HDMI and DVI modules
- RGB+A pass-through module – includes integrated RGB and Audio cables
- Power Module compatible with India power plugs

FEATURES

- **Completely Two-Faced** – To provide easy access, HydraPort is double-sided and each side accommodates 8 A/V or Data modules, 4 Power modules, 2 Keypad modules or any combination of these.
- **More Ways To Enovate** – HydraPort incorporates the Enova UPX Transmitters behind the scenes to support the Enova DVX and AVX Presentation Switchers.
- **Elegant and Unassuming** – The cable ring allows HydraPort to retract flush with the table once connections have been made without crimping or binding any connected cables. The typical wire mess is concealed.
- **No Electrician Required** – The integrated IEC power inlet assembly easily connects to four different power modules providing international power support for virtually every country.



- **Control The Room** – Add Metreau or Novara Keypad modules to add device, lighting, shade or climate control as well as initiate pre-programmed events – all from the HydraPort console.
- **Simplifying the Installation** – A sturdy, re-usable cutting template and router bits are available to simplify the process of cutting the table or lectern, ensuring a correct fit every time.



BULLSEYE TARGET PRODUCT

This is a Target Product as defined in the U.S. BullsEye Partnership Program. Participating AMX Dealers can be rewarded for purchasing Target Products as a % of their total annual net revenue.



HELPFUL HINT

Build the perfect connection port for all your A/V, control, network, and power requirements using the HydraPort Preview web application.



WATCH THE VIDEO

See HydraPort in action, live from InfoComm 2010, by watching the video profile online at: www.amx.com/assets/videos/HPX-1600.mp4



TRAINING AVAILABLE

For important installation, configuration and programming techniques, AMX University training is available. Just visit www.amx.com/training



SPOTLIGHT: ENOVA

A new, innovative philosophy on how you think about A/V technology: Enova is part of an evolution to collaborate, communicate and educate using AV technology. Visit www.amx.com/enova/ to learn more.

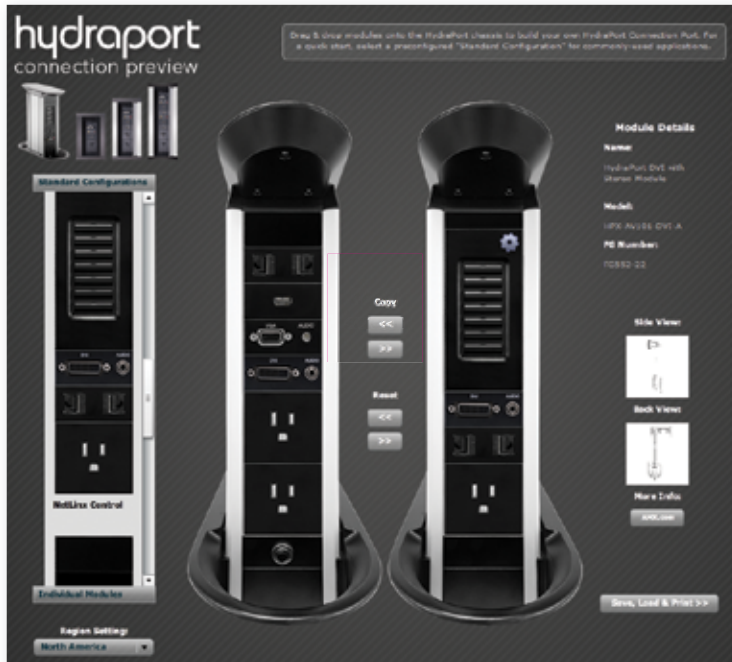


D-TOOLS CERTIFIED PRODUCT

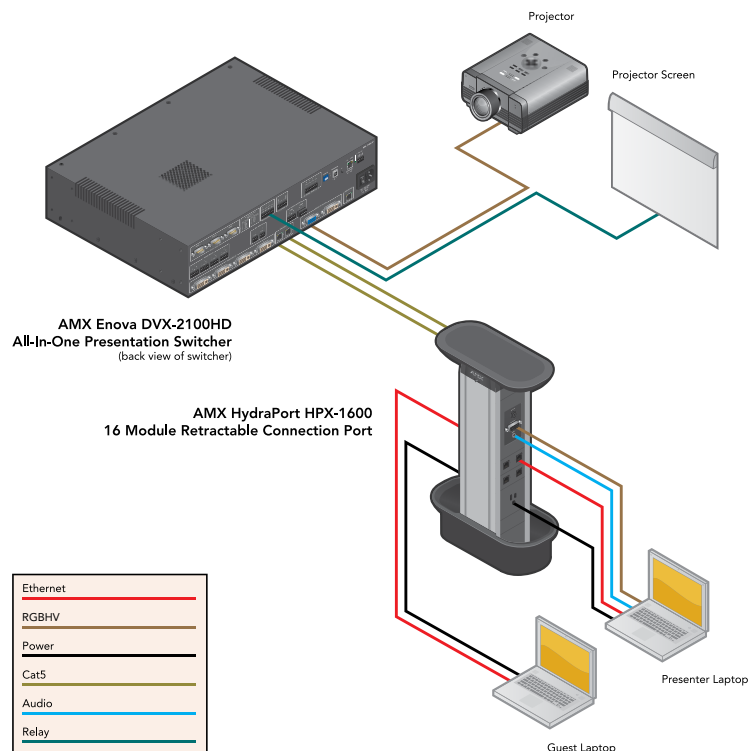
This product can be found in the D-Tools manufacturer product database and specified as a third party device when building and proposing a system using D-Tools System Integrator software.



A CLOSER LOOK: HYDRAPORT PREVIEW



Print both sides of your connection port for reference, to accompany a sales order, for your records or to show your customer.



SPECIFICATIONS

DIMENSIONS (HWD)

- Max above mounting surface: 9 9/16" x 10 9/16" x 4 1/2" (243mm x 268mm x 115mm)
- Max below mounting surface: 15 1/16" x 11 9/16" x 6 1/4" (383mm x 293mm x 159mm)
- Mounting surface footprint: 10 9/16" x 4 1/2" (268mm x 115mm)
- Min. mounting surface thickness: 3/4" (19mm)
- Max mounting surface thickness: 2" (50mm)
- Table Cutout Dimensions: Use Router Guide

NUMBER OF MODULES SUPPORTED

- Module sizes are provided in "HydraPort units". Modules range in size from 1/2 to 4 1/2 HydraPort units.
- Each of the two sides has room for 9 total "HydraPort units" meaning that each side can support up to 9 total single-space modules
- It is generally recommended to install a single-space blank as the top-most module on each side for visibility, leaving space for 8 single-space modules (8 HydraPort units). These top-most blanks are included with the chassis.
- When using modules with a decor-style adapter plate as the top-most module, the single-space blank at the top can be omitted.
- When using a power module that requires 2.5 module spaces, the single-space blank at the top can be replaced with a half-space blank.

WEIGHT

- Base Assembly only: 4.4 lbs (2 Kg)
- Typical Installation: 6.6 lbs (3 Kg)

MODULES AVAILABLE

- International, Black trim (FG550-BL)
- International, Silver trim (FG550-SL)
- North American, Black trim (FG550-01-BL)
- North American, Silver trim (FG550-01-SL)

ENCLOSURE

- Natural finish metal frame with plastic top and bottom covers moving vertically in a plastic sleeve assembly.
- Matt black top cover and trim ring (FG550-BL, FG550-01-BL)
- Matt silver top cover and trim ring (FG550-SL, FG550-01-SL)
- Matt black module face plates on all I/O modules

CONNECTIONS

- IEC 320 C14 Power cord receptacle on included power inlet assembly (FG550-BL, FG550-SL)
- Included AC Power Cord (FG-550-01-BL, FG550-01-SL)
- Rear connections for individual modules are routed through openings in the unit's bottom cover.

RECOMMENDED ACCESSORIES

DESCRIPTION

PART

PAGE

HPX-AV101-HDMI	Single HDMI Module	(FG552-24)	97
HPX-AV101-DVI	Single DVI Module	(FG552-23)	97
HPX-AV101-DVI+A	DVI with Stereo Module with Integrated Cables	(FG552-22)	97
HPX-AV100-CS+A	Composite with Stereo Module	(FG552-10)	97
HPX-AV101-RGB+A	RGB with Stereo Module with Pre-Attached Cables	(FG552-21)	98
HPX-AV100-RGB+A	RGBHV with Stereo Module	(FG552-11)	97
HPX-C5400-CS+A	Composite with Stereo UPX Cat5 Kit with HPX Carrier Module	(FG552-50-BL-K)	99
HPX-C5400-VGA+A	RGBHV with Stereo UPX Cat5 Kit with HPX Carrier Module	(FG552-51-BL-K)	99
HPX-C5400-CN+A	Component with Stereo UPX Cat5 Kit with HPX Carrier Module	(FG552-52-BL-K)	98
HPX-N100-RJ45	Single RJ-45 Module	(FG553-01)	99
HPX-N102-RJ45	Dual RJ-45 Module	(FG553-02)	100
HPX-N100-USB	Single USB Module	(FG553-11)	99
HPX-CPT200	HydraPort Cable Pass-Thru Module	(FG552-41)	99
HPX-U100-BTN	Single Button Module with LED	(FG554-01)	101
HPX-U200-MOD	Modero Connection Module	(FG554-81)	101
HPX-U400-MET-6N	Metreau 6-Button Keypad Kit with HPX Carrier	(FG554-11-BL-K)	102
HPX-U400-MET-7	Metreau 7-Button Keypad Kit with HPX Carrier	(FG554-13-BL-K)	102
HPX-U400-MET-13	Metreau 13-Button Keypad Kit with HPX Carrier	(FG554-12-BL-K)	102
HPX-U400-CP-1008	Novara 8-Button ControlPad (US) Module	(FG554-71-BL)	102
HPX-U400-SP-08-AX	Novara 8-Button Keypad with AxLink (US) Module	(FG554-51-BL)	103
HPX-P200-US	Power Outlet (US) Module	(FG551-01)	100
HPX-P200-UK	Power Outlet (UK) Module	(FG551-11)	101
HPX-P200-EU	Power Outlet (EU) Module with Cord	(FG551-21)	100
HPX-P200-AU	Power Outlet (AU) Module with Cord	(FG551-31)	100
HPX-P250-IN	Power Outlet (IN) Module with Cord	(FG551-41)	101
HPX-B050	1/2 M Blank Panel	(FG558-01)	98
HPX-B100	1 M Blank Panel	(FG558-02)	98
HPX-B200	2 M Blank Panel	(FG558-03)	98
HPX-B050-L	1/2 M Custom Label Panel	(FG558-11)	98
HPX-B100-L	1 M Custom Label Panel	(FG558-12)	98
HPX-AC-SB	1 M Custom Label Panel	(FG559-01)	98
HPX-AC-MB	Accessory Mounting Bracket	(FG559-21)	97

HYDRAPORT CONNECTION MODULES



OVERVIEW

The HPX-AV101-HDMI module provides a HDMI connection to the HydraPort chassis.

HPX-AV101-HDMI 1 HydraPort Unit (8 total HydraPort units on each side of the chassis) (FG552-24)



OVERVIEW

The HPX-AC-MB metal bracket mounts to the HydraPort base assembly on the under-side of the table for convenient, out-of-the-way storage of accessory hardware devices such as power supplies, break-out boxes, Cat5 or Fiber transmitters, and NI-700/900 NetLinx Masters.

It contains mounting holes to support all AMX and AutoPatch 1/4 and 1/3 rack-width boxes as well as tie-wrap loops to securely mount almost any accessory.

Up to two mounting brackets can be installed on each HydraPort chassis – one on each side.

HPX-AC-MB (FG559-21)



OVERVIEW

The HPX-AC-SB is a stop block used to limit expansion of a partially-filled chassis to only expose the populated modules.

HPX-AC-SB (FG559-01)



OVERVIEW

The HPX-AV100-CS+A module provides Composite video plus stereo audio connectivity to the HydraPort chassis.

HPX-AV100-CS+A 1 HydraPort Unit (8 total HydraPort units on each side of the chassis) (FG552-10)



OVERVIEW

The HPX-AV100-RGB+A module provides RGBHV video plus stereo audio connectivity to the HydraPort chassis.

HPX-AV100-RGB+A 1 HydraPort Unit (8 total HydraPort units on each side of the chassis) (FG552-11)



OVERVIEW

The HPX-AV101-DVI module provides a DVI connection to the HydraPort chassis.

HPX-AV101-DVI 1 HydraPort Unit (8 total HydraPort units on each side of the chassis) (FG552-23)



OVERVIEW

The HPX-AV101-DVI+A module provides DVI video plus stereo audio connectivity to the HydraPort chassis with integrated video and audio cables.

HPX-AV101-DVI-A 1 HydraPort Unit (8 total HydraPort units on each side of the chassis) (FG552-22)



OVERVIEW

The HPX-AV101-RGB+A module provides RGB video plus stereo audio connectivity to the HydraPort chassis with pre-attached video and audio cables.

HPX-AV101-RGB+A 1 HydraPort Unit (FG552-21)



OVERVIEW

Blanks are available for unused slots in the HydraPort chassis.

HPX-B050 1/2 HydraPort Unit (FG558-01)



OVERVIEW

The HPX-B050-L is a blank panel that is pad printed with custom text, and are available for labeling slots in the HydraPort chassis.

HPX-B050-L 1/2 HydraPort Unit (FG558-11)



OVERVIEW

Blanks are available for unused slots in the HydraPort chassis.

HPX-B100 1 HydraPort Unit (FG558-02)



OVERVIEW

The HPX-B100-L is a blank panel that is pad printed with custom text, and are available for labeling slots in the HydraPort chassis.

HPX-B100-L 1 HydraPort Unit (FG558-12)



OVERVIEW

Blanks are available for unused slots in the HydraPort chassis.

HPX-B200 2 HydraPort Units (FG558-03)



OVERVIEW

The HPX-C5400-CN+A module provides Component video plus stereo audio connectivity to the HydraPort chassis and activates on button press.

HPX-C5400-CN+A 4 HydraPort Units (FG552-52-BL-K)



OVERVIEW

The HPX-C5400-CS+A module provides Composite video plus stereo audio connectivity to the HydraPort chassis and activates on button press.

HPX-C5400-CS+A 4.5 HydraPort Units (FG552-50-BL-K)



OVERVIEW

The HPX-C5400-VGA+A module provides RGBHV video plus stereo audio connectivity to the HydraPort chassis and activates on button press.

HPX-C5400-VGA+A 4.5 HydraPort Units (FG552-51-BL-K)



OVERVIEW

The HPX-CPT200 provides a convenient way to keep cables out of sight in an HPX-1600 chassis, while still being readily available to connect when needed.

HPX-CPT200 (FG552-41)



OVERVIEW

The HPX-CPT200-W provides a convenient way to keep cables out of sight in an HPX-600, 900 or 1200 chassis, while still being readily available to connect when needed.

HPX-CPT200-W (FG562-41)



OVERVIEW

The HPX-N100-RJ45 module provides a single RJ-45 connection to the HydraPort chassis.

HPX-N100-RJ45 1 HydraPort Unit (FG553-01)



OVERVIEW

The HPX-N100-USB module provides a single USB connection to the HydraPort chassis.

HPX-N100-USB 1 HydraPort Unit (FG553-11)



OVERVIEW

The HPX-N102-RJ45 module provides two RJ-45 connections to the HydraPort chassis.

HPX-N102-RJ45 1 HydraPort Unit (FG553-02)



OVERVIEW

The HPX-P200-AU module provides power connectivity for EU plug types to the HydraPort chassis.

HPX-P200-AU 2 HydraPort Units (FG551-31)



OVERVIEW

The HPX-P200-EU module provides power connectivity for EU plug types to the HydraPort chassis.

HPX-P200-EU 2 HydraPort Units (FG551-21)



OVERVIEW

The HPX-P200-PC-AU module provides power connectivity for AU plug types to the HydraPort chassis.

HPX-P200-PC-AU 2 HydraPort Units (FG561-31)



OVERVIEW

The HPX-P200-PC-EU module provides power connectivity for EU plug types to the HydraPort chassis.

HPX-P200-PC-EU 2 HydraPort Units (FG561-21)



OVERVIEW

The HPX-P200-PC-US module provides power connectivity for US plug types to the HydraPort chassis.

HPX-P200-PC-US 2 HydraPort Units (FG561-01)



OVERVIEW

The HPX-P200-UK module provides power connectivity for UK plug types to the HydraPort chassis.

HPX-P200-UK 2.5 HydraPort Units (FG551-11)





OVERVIEW

The HPX-P200-US module provides power connectivity for US plug types to the HydraPort chassis.

HPX-P200-US 2 HydraPort Units (FG551-01)



OVERVIEW

The HPX-P250-IN module provides power connectivity for India plug types to the HydraPort chassis.

HPX-P250-IN 2.5 HydraPort Units (FG551-41)



OVERVIEW

The HPX-P250-PC-IN module provides power connectivity for IN plug types to the HydraPort chassis.

HPX-P250-PC-IN 2.5 HydraPort Units (FG561-41)



OVERVIEW

The HPX-P250-PC-UK module provides power connectivity for UK plug types to the HydraPort chassis.

HPX-P250-PC-UK 2.5 HydraPort Units (FG561-11)



OVERVIEW

The HPX-U100-BTN module provides discrete button control to the HydraPort chassis.

HPX-U100-BTN 1 HydraPort Unit (FG554-01)



OVERVIEW

The HPX-U200-MOD module provides a connection for a Modero Table Top Touch Panel to the HydraPort chassis.

HPX-U200-MOD 2 HydraPort Units (FG554-81)



OVERVIEW

The HPX-U400-CP-1008 module is a Novara 8-Button (US) ControlPad designed to install directly into the HydraPort chassis.

FEATURES

- 8-button panel layout
- Blue, backlit buttons with programmable feedback
- Includes acetate sheet with 50 pre-cut button label inserts for easy, cost effective labeling
- 1315 events per panel

HPX-U400-CP-1008 4.5 HydraPort Units (FG554-71-BL)



OVERVIEW

The HPX-U400-MET-13 module is a Metreau 13-Button keypad in a carrier that allows it to be installed into the HydraPort chassis.

FEATURES

- AxLink connectivity to NetLinX master
- Standard buttons include 1-9, 0, ENTER, SAVE, and +/-
- Blue LEDs glow to indicate button selection
- Conveniently matches the NI-3101-SIG Controller
- Bottom button can act as a single button or as two buttons

HPX-U400-MET-13 4.5 HydraPort Units (FG554-12-BL-K)



OVERVIEW

The HPX-U400-MET-6N module is a Metreau 6-Button keypad in a carrier that allows it to be installed into the HydraPort chassis.

FEATURES

- Includes navigation wheel for simplified control
- Blue LEDs light up when buttons are pressed
- Conveniently matches the styling of the NI-3101-SIG Controller

HPX-U400-MET-6N 4.5 HydraPort Units (FG554-11-BL-K)



OVERVIEW

The HPX-U400-MET-7 module is a Metreau 7-Button keypad in a carrier that allows it to be installed into the HydraPort chassis.

FEATURES

- AxLink connectivity to NetLinX master
- Standard buttons include TUNER, DVD, LIGHTS, FAN, BLINDS, DISPLAY, and +/-
- Blue LEDs glow to indicate button selection
- Conveniently matches NI-3101-SIG Controller
- Bottom button can act as a single button or as two buttons

HPX-U400-MET-7 4.5 HydraPort Units (FG554-13-BL-K)



OVERVIEW

The HPX-U400-R-MET-13 module is a Metreau 13-Button Keypad in a carrier that allows it to be installed into the HydraPort chassis.

HPX-U400-R-MET-13 4.5 HydraPort Units (FG564-12-BL)



OVERVIEW

The HPX-U400-R-MET-6N module is a Metreau 6-Button Keypad in a carrier that allows it to be installed into the HydraPort chassis.

HPX-U400-R-MET-6N 4.5 HydraPort Units (FG564-11-BL)



OVERVIEW

The HPX-U400-R-MET-7 module is a Metreau 7-Button Keypad in a carrier that allows it to be installed into the HydraPort chassis.

HPX-U400-R-MET-7 4.5 HydraPort Units (FG564-13-BL)



OVERVIEW

The HPX-U400-SP-08-AX module is a Novara 8-Button (US) AxLink KeyPad designed to install directly into the HydraPort chassis.

FEATURES

- 8-button panel layout
- 4-pin AxLink connector and Status LED
- Blue, backlit buttons with controllable feedback
- Includes acetate sheet with 50 pre-cut button label inserts for easy, cost effective labeling

HPX-U400-SP-08-AX 4.5 HydraPort Units (FG554-51-BL)

HPG-10

3/4" Mini-Grommet

3/4" Mini-Grommet (Pack of 10)	(FG570-01-10K)
3/4" Mini-Grommet (Pack of 25)	(FG570-01-25K)
3/4" Mini-Grommet (Pack of 50)	(FG570-01-50K)
3/4" Mini-Grommet (Pack of 100)	(FG570-01-100K)



OVERVIEW

The HPG-10 module provides an elegant cable management solution for smaller tables or special locations on a table.



BULLSEYE TARGET PRODUCT

This is a Target Product as defined in the U.S. BullsEye Partnership Program. Participating AMX Dealers can be rewarded for purchasing Target Products as a % of their total annual net revenue.



TRAINING AVAILABLE

For important installation, configuration and programming techniques, AMX University training is available. Just visit www.amx.com/training

HPG-20

2" Grommet

2" Gloss Black in Black Metal	(FG570-02B-GB)
2" Matte Black in Black Metal	(FG570-02B-MB)
2" Gloss Silver in Black Metal	(FG570-02B-GS)
2" Frosted in Black Metal	(FG570-02B-FG)
2" Gloss Black in Silver Metal	(FG570-02S-GB)
2" Matte Black in Silver Metal	(FG570-02S-MB)
2" Gloss Silver in Silver Metal	(FG570-02S-GS)
2" Frosted in Silver Metal	(FG570-02S-FG)
2" Matte Silver Plastic	(FG570-02-SL)



OVERVIEW

The HPG-20 module provides an elegant cable management solution for smaller tables or special locations on a table.



BULLSEYE TARGET PRODUCT

This is a Target Product as defined in the U.S. BullsEye Partnership Program. Participating AMX Dealers can be rewarded for purchasing Target Products as a % of their total annual net revenue.



TRAINING AVAILABLE

For important installation, configuration and programming techniques, AMX University training is available. Just visit www.amx.com/training

HPX-AC-TK

Installation Tool Kit

(FG559-90)



OVERVIEW

The HydraPort Installation Tool Kit includes a sturdy, re-usable cutting template and router hardware to simplify the process of cutting the table or lectern, ensuring a correct fit every time.

The tool kit includes the following components:

- 1 HPX-AC-TMPLT, FG559-91 Router Guide
- 4 Adhesive Mounting Strips
- 1 Router Bit (Freud 12-128 or Whiteside 1072)
- 1 Router Guide Bushing (Woodcraft 144693)
- 1 Router Lock Nut (Woodcraft 144696)

NOTE: If you purchase the router guide by itself, you must procure and use the router hardware listed above in order to properly install the HydraPort.



BULLSEYE TARGET PRODUCT

This is a Target Product as defined in the U.S. BullsEye Partnership Program. Participating AMX Dealers can be rewarded for purchasing Target Products as a % of their total annual net revenue.



HELPFUL HINT

Build the perfect connection port for all your A/V, control, network, and power requirements using the HydraPort Preview web application.



WATCH THE VIDEO

See HydraPort in action, live from InfoComm 2010, by watching the video profile online at: www.amx.com/assets/videos/HPX-1600.mp4



TRAINING AVAILABLE

For important installation, configuration and programming techniques, AMX University training is available. Just visit www.amx.com/training



SPOTLIGHT: ENOVA

A new, innovative philosophy on how you think about A/V technology: Enova is part of an evolution to collaborate, communicate and educate using AV technology. Visit www.amx.com/enova/ to learn more.



D-TOOLS CERTIFIED PRODUCT

This product can be found in the D-Tools manufacturer product database and specified as a third party device when building and proposing a system using D-Tools System Integrator software.

HPX-AC-TMPLT

Installation Router Guide

(FG559-91)



OVERVIEW

The Router Guide is a sturdy, re-usable cutting template to simplify the process of cutting the table or lectern, ensuring a correct fit every time.

Router Guide is only compatible with the following router hardware:

- Freud 12-128 or Whiteside router bit
- Woodcraft 144693 Guide Bushing
- Woodcraft 144696 Lock Nut



BULLSEYE TARGET PRODUCT

This is a Target Product as defined in the U.S. BullsEye Partnership Program. Participating AMX Dealers can be rewarded for purchasing Target Products as a % of their total annual net revenue.



HELPFUL HINT

Build the perfect connection port for all your A/V, control, network, and power requirements using the HydraPort Preview web application.



WATCH THE VIDEO

See HydraPort in action, live from InfoComm 2010, by watching the video profile online at: www.amx.com/assets/videos/HPX-1600.mp4



TRAINING AVAILABLE

For important installation, configuration and programming techniques, AMX University training is available. Just visit www.amx.com/training



SPOTLIGHT: ENOVA

A new, innovative philosophy on how you think about A/V technology: Enova is part of an evolution to collaborate, communicate and educate using AV technology. Visit www.amx.com/enova/ to learn more.

HPX-AC-HSP

HydraPort Spring Kit for Heavy Loads

(FG559-42)



OVERVIEW

The HPX-AC-HSP Spring Kit for Heavy Loads is designed to improve the performance of HydraPort HPX-1600 Lift/Retract Mechanism when the unit is heavily loaded.

- Heavy loads may occur when all of the available module spaces of the HPX-1600 are populated or when multiple heavy cables are included in the service loop of the HPX-1600
- The HPX-AC-HSP provides roughly twice the lifting force of the standard springs shipped with the HPX-1600
- Installation of the HPX-AC-HSP will increase the force required by the user to press the HPX-1600 into its retracted position



HELPFUL HINT

Build the perfect connection port for all your A/V, control, network, and power requirements using the HydraPort Preview web application.



TRAINING AVAILABLE

For important installation, configuration and programming techniques, AMX University training is available. Just visit www.amx.com/training



SPOTLIGHT: ENOVA

A new, innovative philosophy on how you think about A/V technology: Enova is part of an evolution to collaborate, communicate and educate using AV technology. Visit www.amx.com/enova/ to learn more.

